



An tSeirbhís Chúirteanna
Courts Service

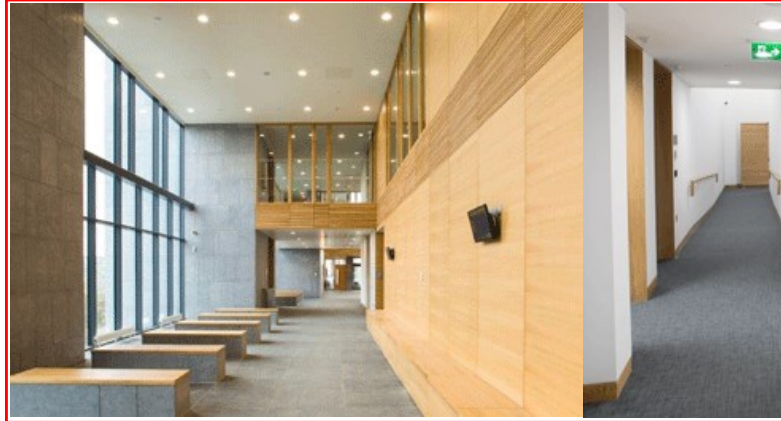
Letterkenny Courthouse



The courthouse sits on an elevated site approximately 200 metres from the Main Street in Letterkenny.

It is a four storey building consisting of four courtrooms, judicial, jury, visiting professional, custodial, staff, public and ancillary accommodation. It also caters for a flexible office accommodation wing.

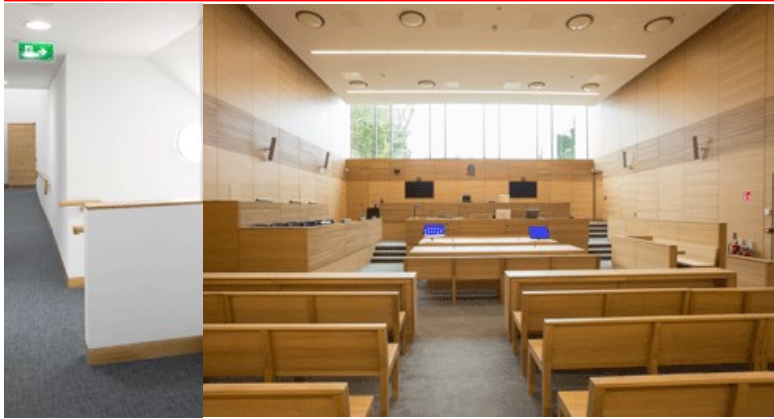
Staff car parking spaces, a service area and a secure van dock are located on the lower ground floor.



A landscaped forecourt leads towards the main public entrance space located on a raised ground floor. This main entrance is defined by the public atrium connecting the office wing to the support services and the court rooms behind.

The use of natural daylight is exploited in a way which is sensitive to the proceedings in each of the courtrooms. The office spaces enjoy large picture windows allowing views of the urban landscape and across the valley of the River Swilly. Other public spaces in the building enjoy generous natural daylighting through full height glazing on the south east and south west facades.

The stone elements and recessed glazing used in the foyer and public spaces add visual interest to the facade while integrating into the landscape design. This creates a meaningful relationship between a civic building and a stepping site and helps soften and enhance the surrounding environment. The building is a positive addition to



Letterkenny town and provides a landmark courthouse suitable for all court users.

How to get there

By bus (Bus Éireann)

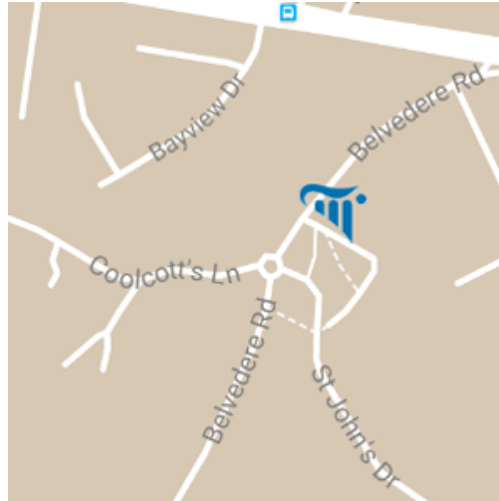
Route 64 from Sligo / route 32 from Dublin to Letterkenny. The Bus Station, Station Road Roundabout, is a 15 minute walk to the courthouse. For timetable details visit www.buseireann.ie.

By car

From Sligo: take the N15 to Ballybofey, then the N13 to Letterkenny. **From Dublin:** Take the M1 to Dunleer, then follow the N2 to Aughnacloy, then the A5 to Strabane, from there the N14 to Letterkenny.

Parking

There is no parking available in front of the courthouse. There is on street parking nearby and car parks available in the town.



Enquiries

Letterkenny Court Office

Courthouse, High Road, Letterkenny, Co.
Donegal.

Tel: +353 74 920 6000

Fax: +353 74 960 1531

Email: letterkennycourtoffice@courts.ie

Office opening hours :

Monday to Friday:

10 a.m. - 1.00 p.m.

and

2.00 p.m. - 4 .30 p.m.

Produced by the Courts Service
Information Office
February 2018

visit www.courts.ie



An tSeirbhís Chúirteanna
Courts Service