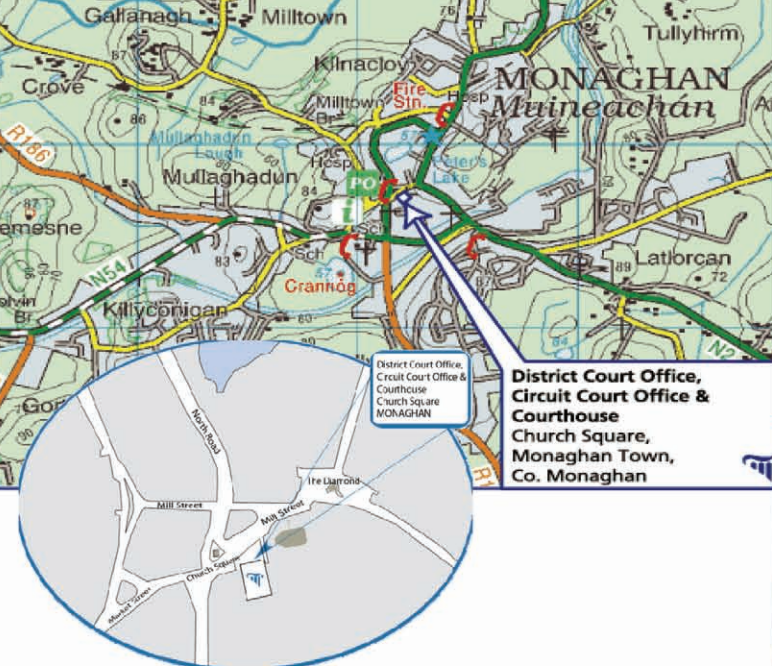




Monaghan Courthouse



Enquiries

Northern Regional Office

Tel: +353 (0) 47 38100 / 087 9114185

Fax: +353 (0) 47 38101

E mail: northernro@courts.ie

Monaghan Circuit Court Office

Tel: +353 (0) 47 82388

Fax: +353 (0) 47 82364

Email: MonaghanCC@courts.ie

Monaghan District Court Office

Tel: +353 (0) 47 81417

Fax: +353 (0) 47 81542

Email: MonaghanDC@courts.ie

Produced by the Courts Service
Information Office
February 2011

For Courts Service publications visit
our website www.courts.ie

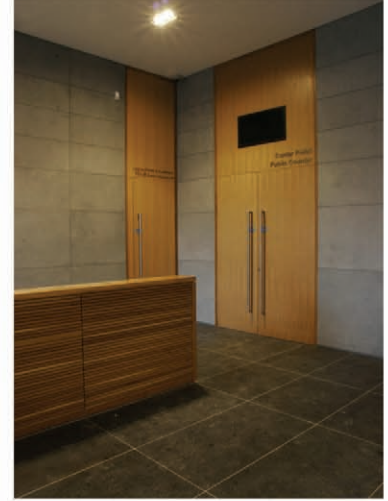


History

The courthouse was designed by Joseph Welland and built in 1829 with stone from a local mountain quarry at Eshnaglogh. A fire damaged the building in 1981 and it was rebuilt in 1986.

Refurbishment

The refurbished building provides three new modern courtrooms. Two are jury courtrooms and the third serves as a family law court. Externally, the building is restored to its original form with the removal of service blocks to the side. Local stone was sourced for repairs to the facade. The entrance foyer has been re-modelled and lined with Carlow limestone and significantly increased in size. A large glazed atrium roof-light illuminates the principle circulation area which is dominated by a new main public staircase constructed in Irish oak. The courtrooms are lined in oak panelling.



Accessibility

A new lift installation ensures that the building is universally accessible. The courtrooms also provide universal access for persons with mobility difficulties. New signage has been designed with accessibility in mind and induction loops have been installed in the courtrooms.

Facilities

- Consultation rooms for legal practitioners
- Victim support room
- Improved jury facilities
- Holding cell area for prisoners

HOW TO GET THERE

By Train (Iarnród Éireann)

There are no railway lines serving County Monaghan. The nearest train station is in Dundalk, County Louth.

For timetable details visit www.irishrail.ie

By Bus (Bus Éireann and Ulster Bus)

Location Monaghan's bus depot is situated on the North Road which is 5 minutes walk from the courthouse and the town centre. Monaghan is on the main Dublin to Letterkenny/Derry bus route.

There are regular buses from Dublin to Monaghan. Ulster Bus operates a regular bus service from Belfast to Monaghan via Armagh and from Galway to Monaghan via Athlone.

For timetable details visit www.buseireann.ie and www.translink.co.uk

By Car

From Dublin: Exit M50 north after the Toll Plaza, at Junction 3 continue forward onto the M1 (signposted Belfast). Leave the M1 at Junction 14 onto the N33 (signposted Ardee/Derry (N2)). Then take N2 for Derry and continue straight for Monaghan. The courthouse is situated at Church Square.

From Belfast: Take A3 via Armagh then at border N12 for Monaghan and at roundabout take 2nd exit onto N2 which leads onto the diamond.

Parking

There is a large car park behind the courthouse. There is also a car park opposite the shopping centre which is behind the courthouse. Pay parking is in operation.